



# STORE+®

## 60" x 32" Vikrell® shower with Aging in Place backerboards, left drain

### 72420116



#### Features

- Tongue-and-groove modular design allows for easy installation during any phase of construction
- Includes four rimmed shelves, two bins, two shower hooks, and two soap dishes with towel bar
- Dishwasher-safe shelves and bins snap into place; no tools required
- Holds up to 30 bottles
- Easy-to-clean, durable high-gloss finish
- Shaving ledge/footrest for added comfort
- Factory-installed Aging in Place backerboards for future grab bar installation
- Innovative Dry-Block™ seal and channeled water containment system form watertight seams

#### Material

- Compression molded from our exclusive solid Vikrell® material

#### Installation

- Alcove
- Caulk-free installation
- Left drain

#### Recommended Products/Accessories

K-23733 Vikrell® cleaner

#### Included Components

72181110 60" x 32" Vikrell® shower base, left drain  
72332106 60" Vikrell® shower back wall with Aging in Place Backerboards  
72425106 32" Vikrell® shower end wall set with Aging in Place backerboards



#### Codes/Standards

CSA B45.5/IAPMO Z124  
ASTM E162  
ASTM E662  
HUD, UM Bulletin 73


#### STERLING® Vikrell® or Acrylic Baths and Shower Bases Ten-Year Limited Warranty

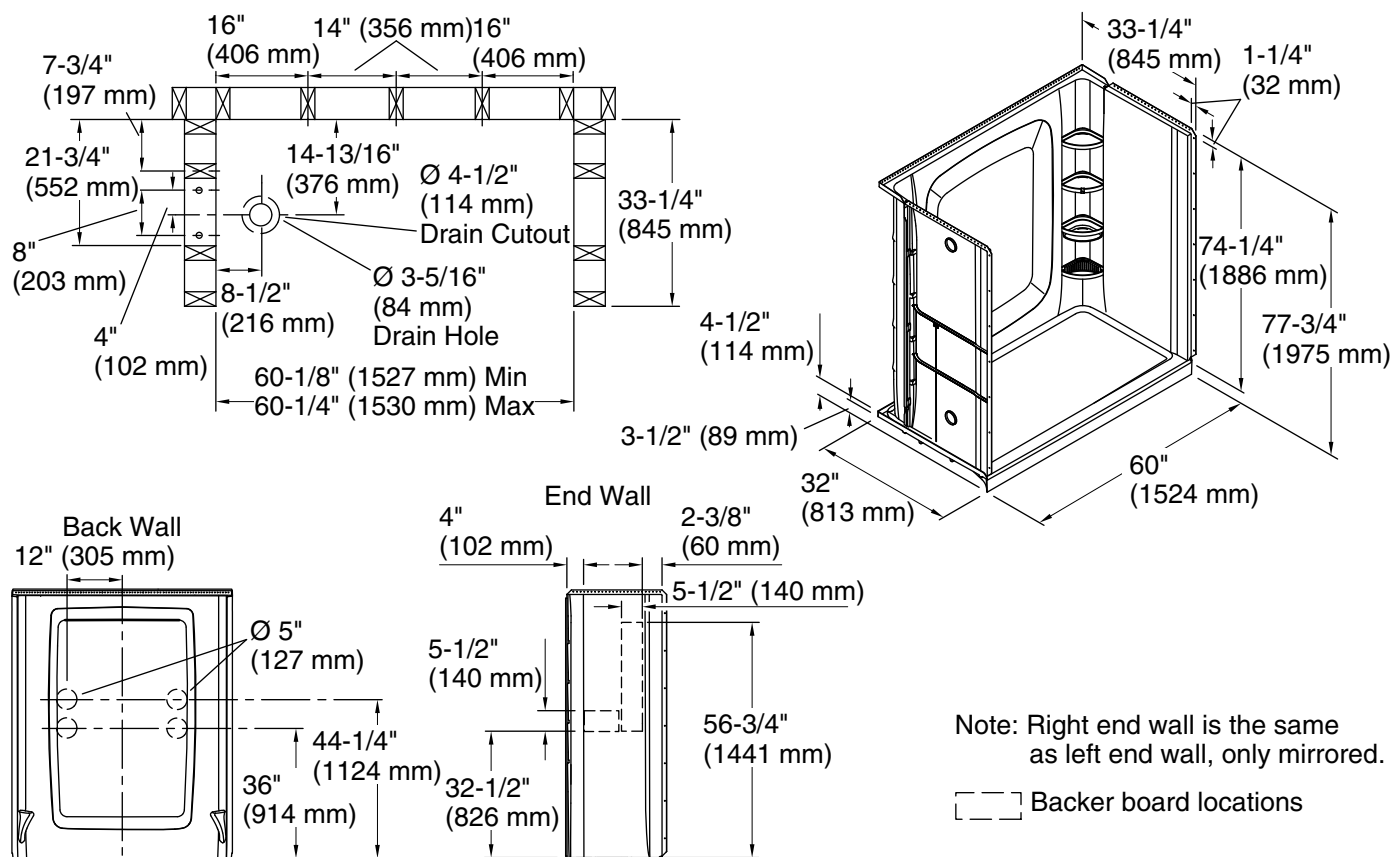
See website for detailed warranty information.

#### Available Colors/Finishes

*Color tiles intended for reference only.*

#### Color Code Description

	0	White
-------------------------------------------------------------------------------------	---	-------



### Technical Information

All product dimensions are nominal.

Drain location:	Left
Weight:	135 lbs (61.2 kg)
Maximum door height:	73" (1854 mm)
Maximum door width:	56-3/4" (1441 mm)

### Notes

Install this product according to the installation instructions.

Studs should be positioned roughly as shown.

Double studding is recommended for pivot shower door installations.

Attach grab bars at the specified backerboard locations only.